



ARBOR RESOURCES

professional consulting arborists and tree care

ARBORIST REPORT

Extract - Maps and Exhibit C Photographs

SARATOGA RETIREMENT COMMUNITY

14500 FRUITVALE AVENUE
SARATOGA, CALIFORNIA

Submitted to:

Ankrom Moisan Architects, Inc.
38 NW Davis, Suite 300
Portland, OR 97209

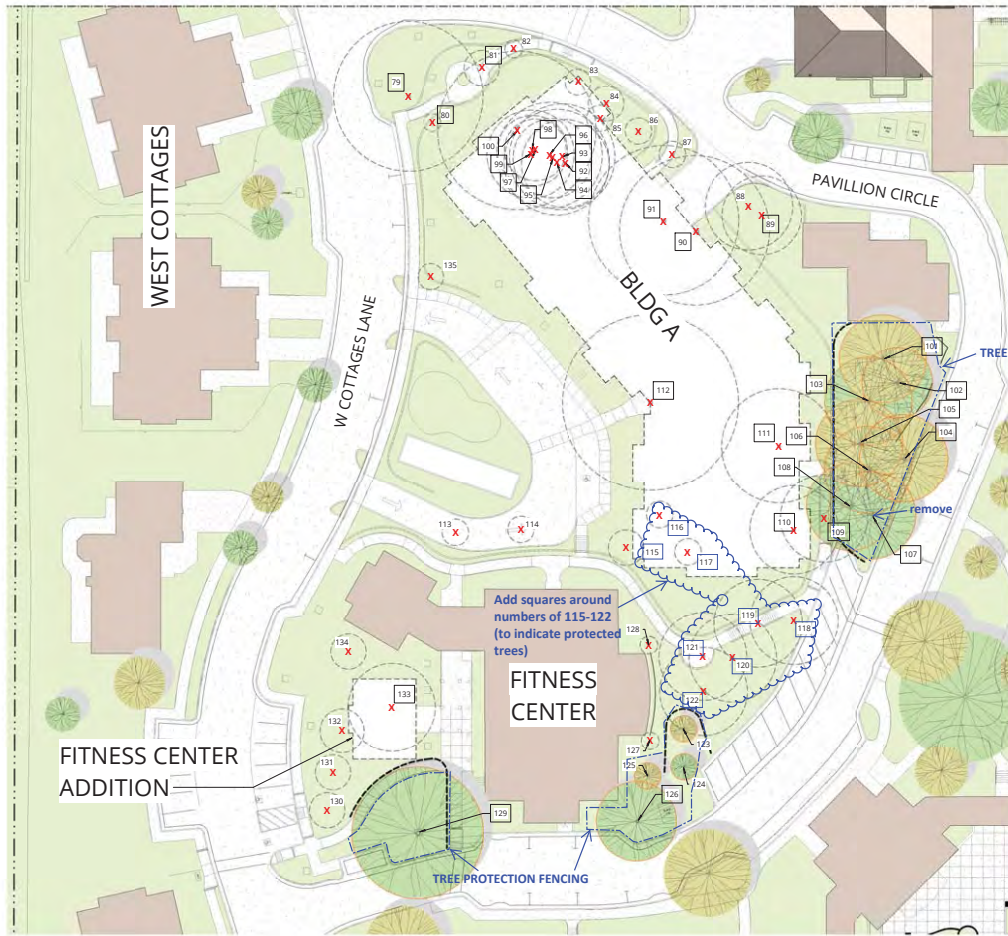
Prepared by:

David L. Babby
Registered Consulting Arborist[®] #399
Board-Certified Master Arborist[®] #WE-4001B

Extracted pages selected and annotations added by the
Preserve SRC Campus Interest Group

Current: May 27, 2021
Prior: March 18, 2020
Initial: February 22, 2019

03/20/2020 11:11:11 AM
 C:\Users\jmoisan\OneDrive\Documents\963117.8\963117.8.dwg



LEGEND

-  TREE TO BE REMOVED
-  TREE TO REMAIN
-  PROTECTED TREE
-  TREE PROTECTION FENCING

1 TREE REMOVAL PLAN - BUILDING A & FITNESS CENTER
 1" = 20'-0"



NOT FOR CONSTRUCTION

Ankrom Moisan
 38 NORTHWEST DAVIS, SUITE 300
 PORTLAND, OR 97209
 T 503.245.7100
 1505 5TH AVE, SUITE 300
 SEATTLE, WA 98101
 T 206.576.1600
 1014 HOWARD STREET
 SAN FRANCISCO, CA 94103
 T 415.252.7863
 ANKROM MOISAN ARCHITECTS, INC.

SARATOGA RETIREMENT COMMUNITY
 14500 FERRELLA
 SARATOGA, CALIFORNIA
 PACIFIC RETIREMENT SERVICES

REVISION	DATE	REASON FOR ISSUE

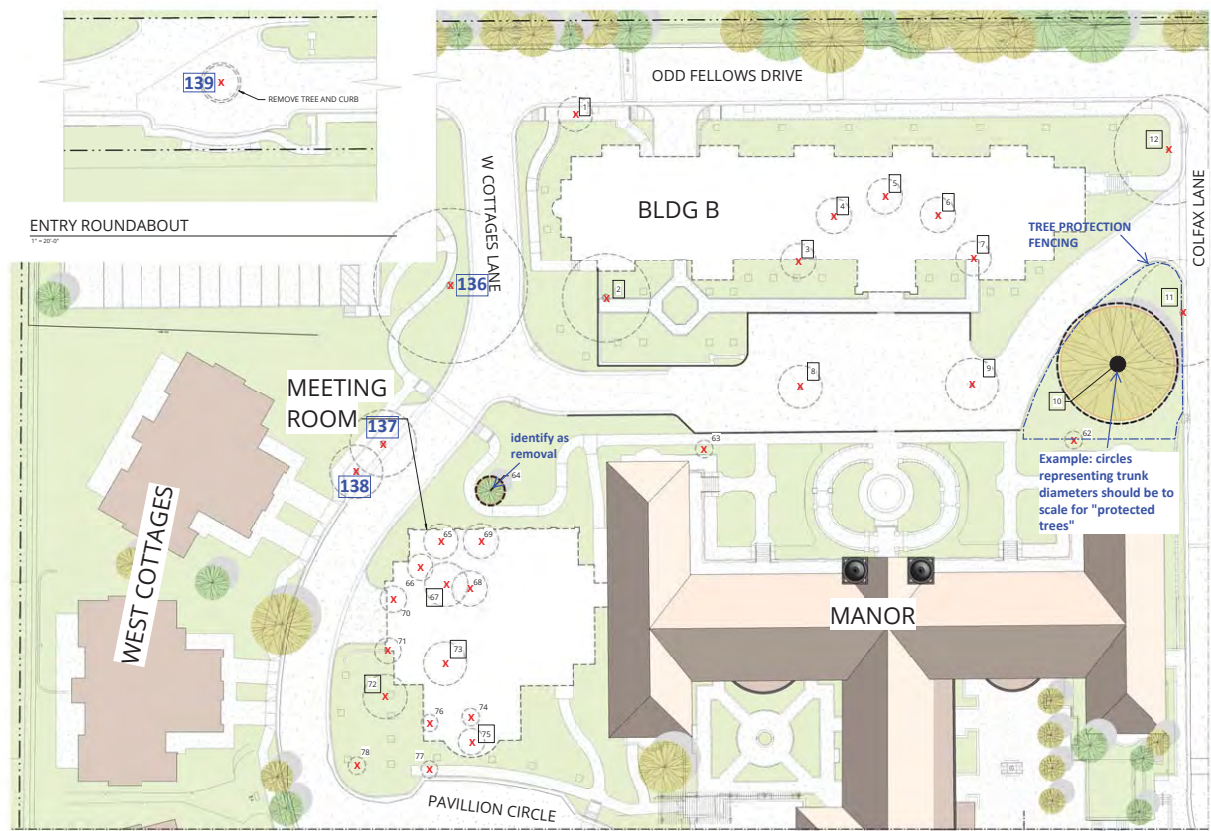
TREE REMOVAL PLAN

SCHEMATIC DESIGN

DATE: 03.30.2020 PROJECT NUMBER: 963117.8
 SHEET NUMBER

CS-1.2

LEGEND



Example: circles representing trunk diameters should be to scale for "protected trees"

1 TREE REMOVAL PLAN - BUILDING B & MEETING ROOM
1" = 20'-0"



NOT FOR CONSTRUCTION

38 NORTHWEST DAVIS, SUITE 300
PORTLAND, OR 97209
T 503.245.7100
1505 5TH AVE, SUITE 300
SEATTLE, WA 98101
T 206.576.1600
1014 HOWARD STREET
SAN FRANCISCO, CA 94103
T 415.252.7863
© ANKROM MOISAN ARCHITECTS, INC.

SARATOGA RETIREMENT COMMUNITY
14500 FERRELLA LANE
SARATOGA, CALIFORNIA
PACIFIC RETIREMENT SERVICES

REVISION	DATE	REASON FOR ISSUE

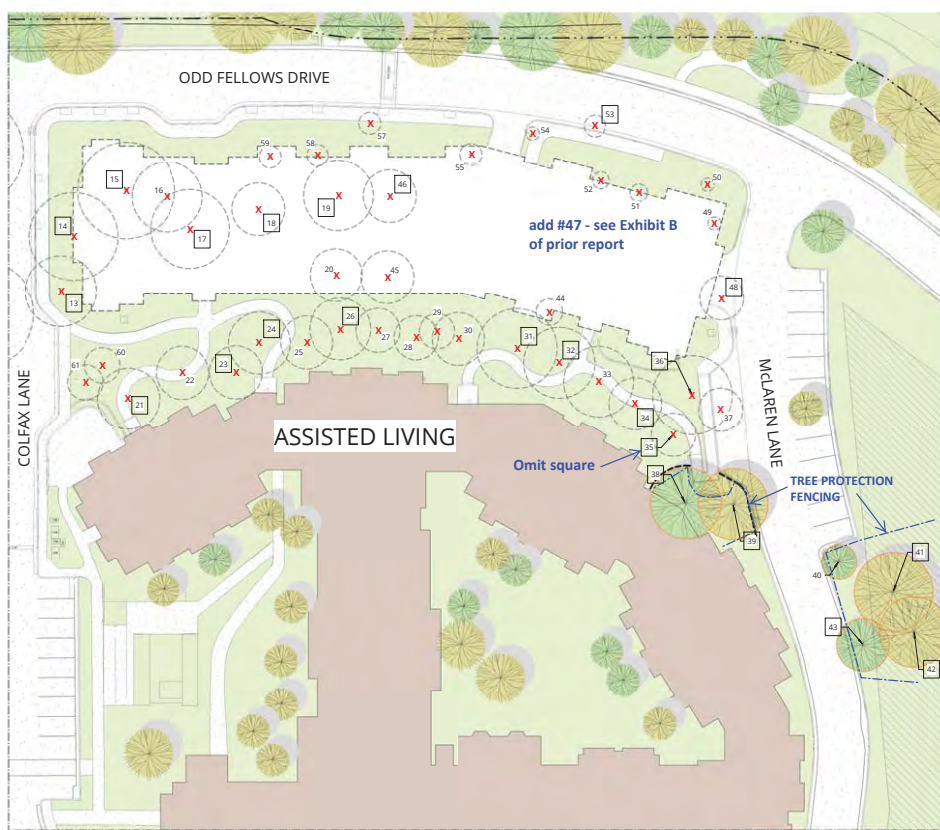
TREE REMOVAL PLAN

SCHEMATIC DESIGN

DATE 03.30.2020	PROJECT NUMBER 963117.8
--------------------	----------------------------

SHEET NUMBER
CS-1.3

03/30/2020 11:11 AM



LEGEND

-  TREE TO BE REMOVED
-  TREE TO REMAIN
-  PROTECTED TREE
-  TREE PROTECTION FENCING

NOT FOR CONSTRUCTION



38 NORTHWEST DAVIS, SUITE 300
PORTLAND, OR 97209
T 503.243.7100

1505 5TH AVE, SUITE 300
SEATTLE, WA 98101
T 206.576.1600

1914 HOWARD STREET
SAN FRANCISCO, CA 94103
T 415.252.7963
© ANKROM MOISAN ARCHITECTS, INC.

SARATOGA RETIREMENT COMMUNITY
14500 FERRIS LANE
SARATOGA, CALIFORNIA

PACIFIC RETIREMENT SERVICES

REVISION	DATE	REASON FOR ISSUE

TREE REMOVAL PLAN

SCHEMATIC DESIGN

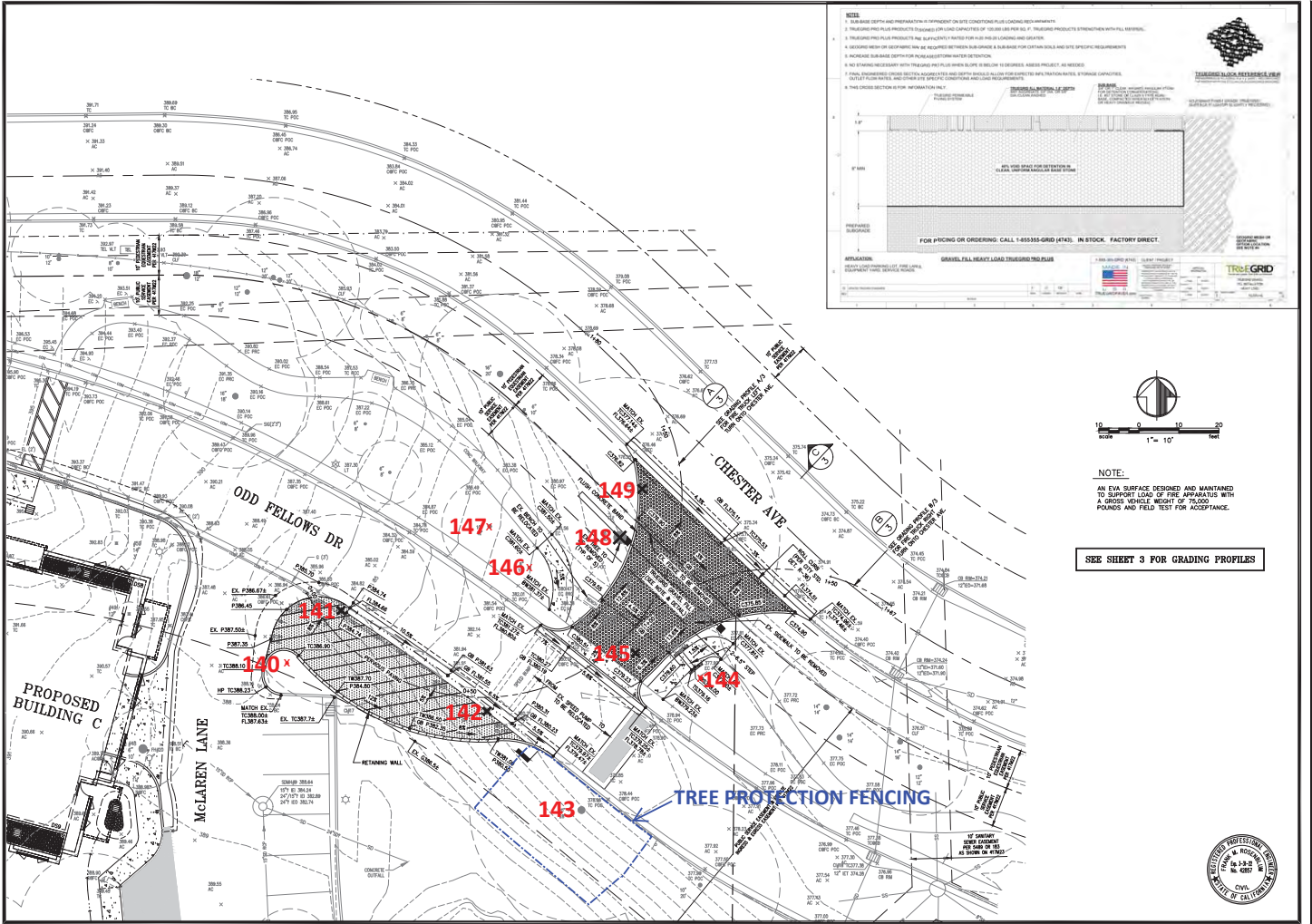
DATE: 03.30.2020 PROJECT NUMBER: 963117.8

SHEET NUMBER: CS-1.4

1 TREE REMOVAL PLAN - BUILDING C

1" = 20'-0"





NOTE:
 AN EIA SURFACE DESIGNED AND MAINTAINED
 TO SUPPORT LOAD OF FIRE APPARATUS WITH
 A GROSS VEHICLE WEIGHT OF 70,000
 POUNDS AND FIELD TEST FOR ACCEPTANCE.

SEE SHEET 3 FOR GRADING PROFILES

DATE	
REVISIONS	
NO.	DESCRIPTION
1	
2	
3	
4	
5	
6	
7	
8	
9	
10	
11	
12	
13	
14	
15	
16	
17	
18	
19	
20	
21	
22	
23	
24	
25	
26	
27	
28	
29	
30	
31	
32	
33	
34	
35	
36	
37	
38	
39	
40	
41	
42	
43	
44	
45	
46	
47	
48	
49	
50	
51	
52	
53	
54	
55	
56	
57	
58	
59	
60	
61	
62	
63	
64	
65	
66	
67	
68	
69	
70	
71	
72	
73	
74	
75	
76	
77	
78	
79	
80	
81	
82	
83	
84	
85	
86	
87	
88	
89	
90	
91	
92	
93	
94	
95	
96	
97	
98	
99	
100	

UNDERWOOD &
 ROSENBLUM, INC.
 CIVIL ENGINEERS
 10000 N. CENTRAL EXPRESSWAY, SUITE 200
 DALLAS, TEXAS 75243
 TEL: 972.382.1111
 FAX: 972.382.1112
 WWW.U&R.COM

SARATOGA RETIREMENT
 COMMUNITY
 EXHIBIT "C"
 GRADING LAYOUT

EMERGENCY VEHICLE ACCESS
 DATE: 04-28-21
 SCALE: 1"=10'
 DRAWN: MJI
 CHECKED: JMS
 SHEET NO: 140028
 SHEET: 2 OF 2

EXHIBIT C:

PHOTOGRAPHS

(21 sheets)

Photo Index

Page C-1: Trees #1 thru 9

Page C-2: Trees #9 thru 16

Page C-3: Trees #17 thru 24

Page C-4: Trees #25 thru 32

Page C-5: Trees #32 thru 40

Page C-6: Trees #41 thru 48

Page C-7: Trees #49 thru 55

Page C-8: Trees #57 thru 63

Page C-9: Trees #64 thru 71

Page C-10: Trees #72 thru 78

Page C-11: Trees #79 thru 86

Page C-12: Trees #87 and 100

Page C-13: Trees #101 thru 110

Page C-14: Trees #111 thru 117

Page C-15: Trees #118 thru 124

Page C-16: Trees #125 thru 130

Page C-17: Trees #131 thru 135

Page C-18: Trees #136 thru 141

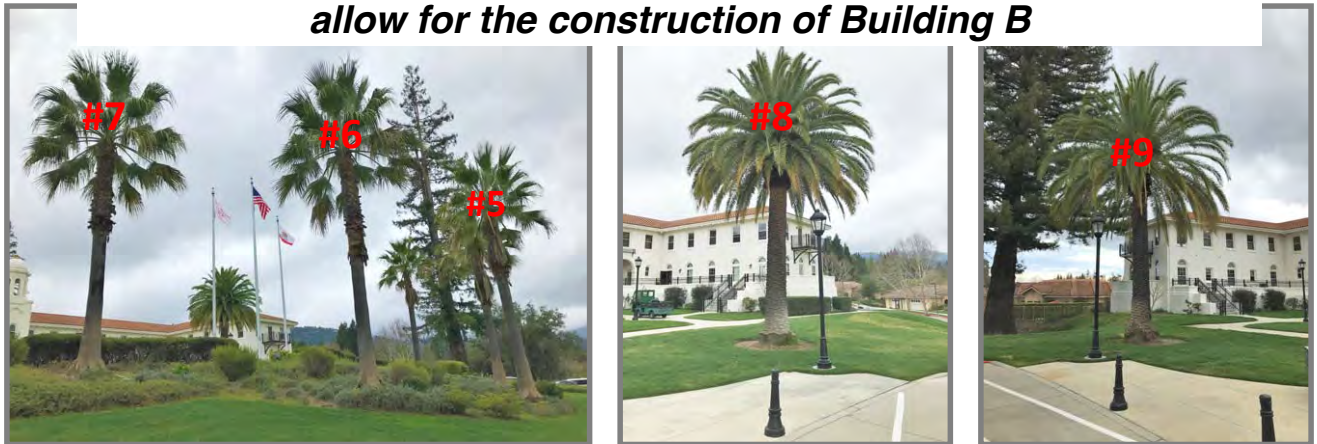
Page C-19: Trees #141 thru 143

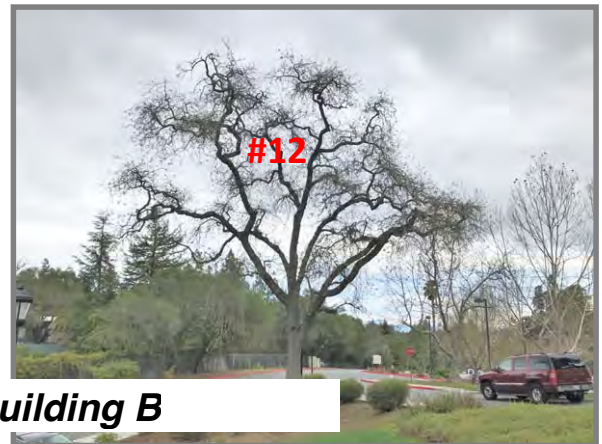
Page C-20: Trees #143 thru 148

Page C-21: Trees #148 and 149



Nine of the 15 trees to be removed from in front of the Manor to allow for the construction of Building B







Removed to allow for Building C



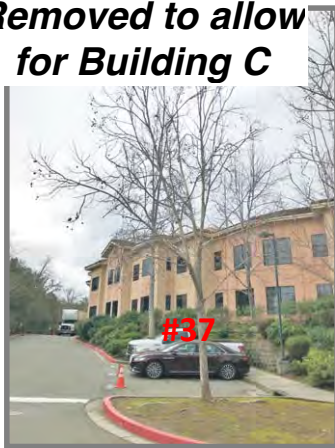


**Removed to allow for
the construction of
Building C**

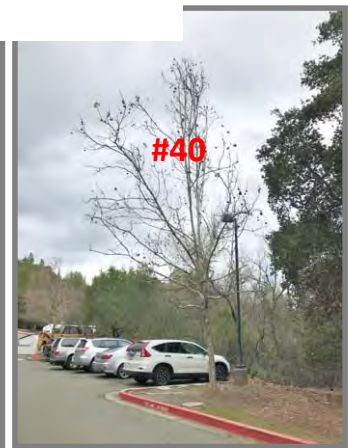


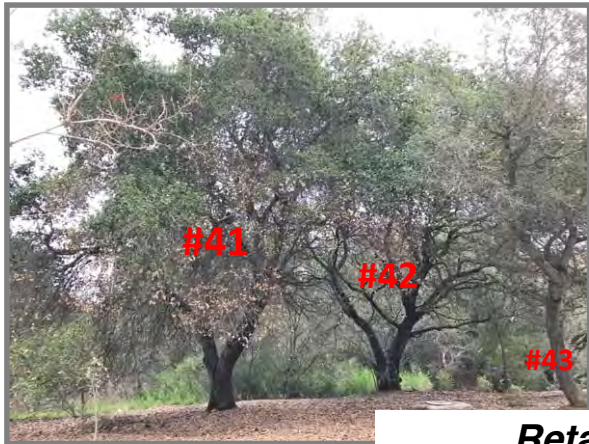
Removed to allow for Building C

Removed to allow for Building C



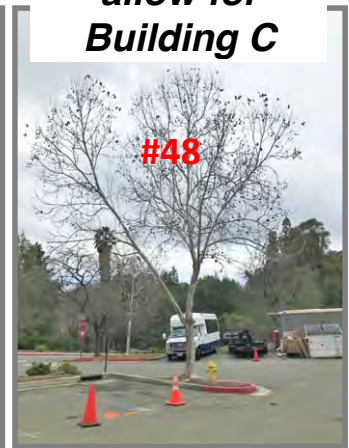
Retained





Retained

Removed to allow for Building C



Removed to allow for Building C

Retained

Removed to allow for Building C

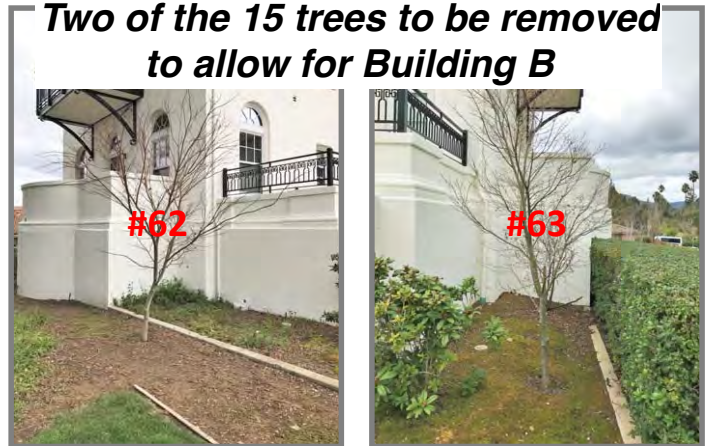


Removed to allow for the construction of Building C





Removed to allow for building C





Seven of the 16 trees to be removed to allow for the construction of the Meeting Room



Removed to allow for Meeting Room



Removed to allow for the construction of the meeting room





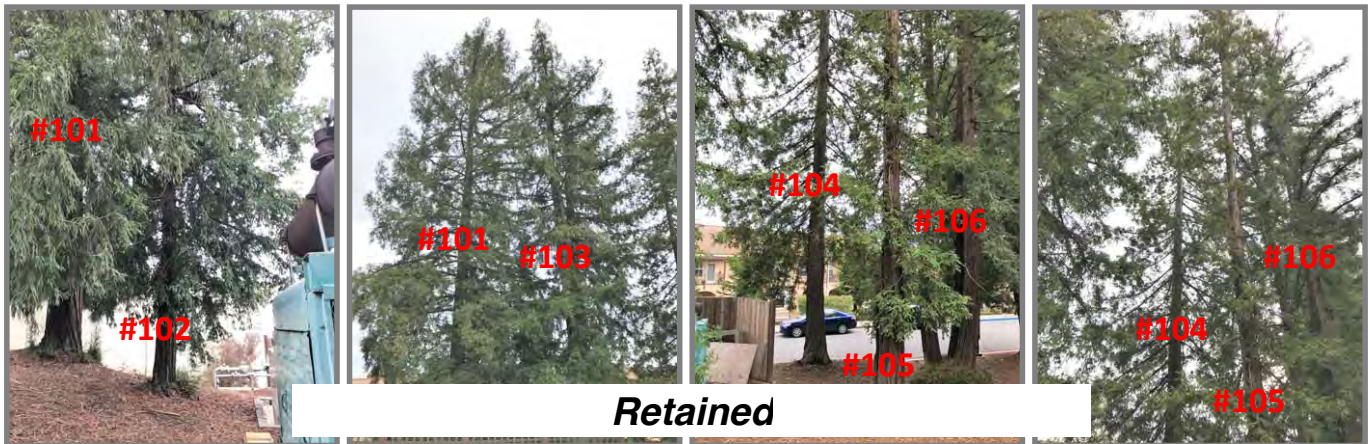
Eight of the 38 trees to be removed from the Odd Fellows Historic Park to allow for the construction of Building A





Removed to allow for the construction of Building A







Removed from the Odd Fellows Historic Park to allow for the construction of Building A





Removed from the Odd Fellows Historic Park to allow for the construction of Building A

Removed

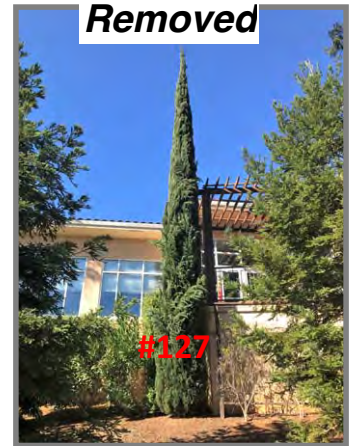


Retained





Retained



Removed



Removed



Retained



One of 5 trees to be removed to allow Fitness center extension



Removed to allow Fitness center extension

Removed



Removed to allow for Building B



Removed to allow for Meeting Room



Two of 9 trees to be removed to allow new emergency vehicle access from Chester Road



Entrance Palm to be removed to facilitate emergency access

*Saratoga Retirement Community, Saratoga
Ankrom Moisan Architects, Inc.*





To be removed to allow new emergency vehicle access from Chester Road





To be removed to allow new emergency vehicle access from Chester Road





To be removed to allow new emergency vehicle access from Chester Road